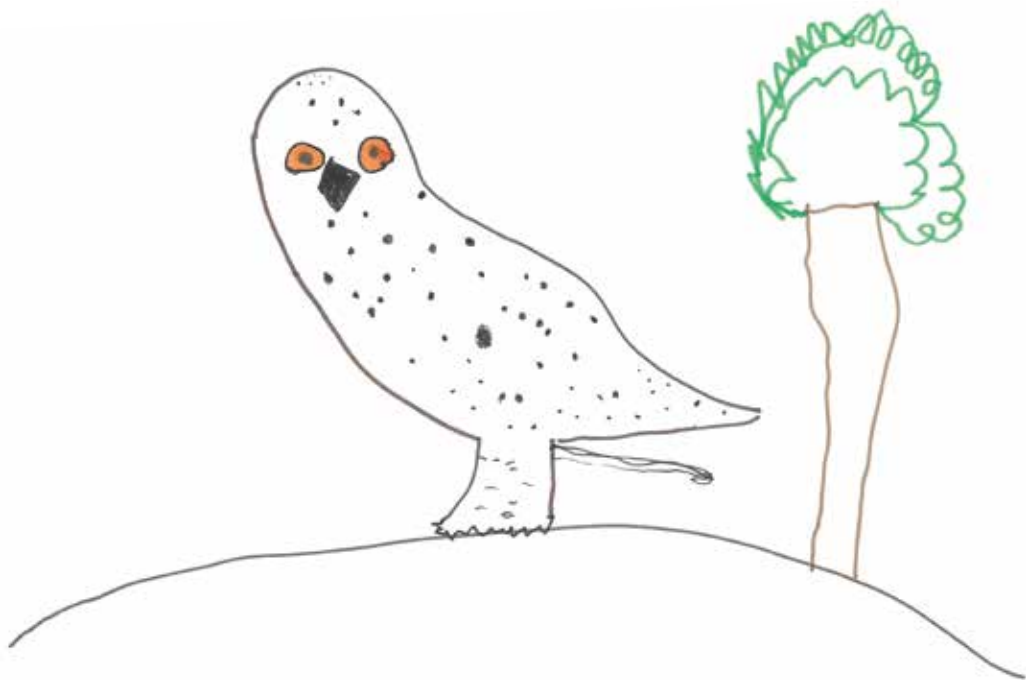


5-7
years
Recommended age

HORNIMAN
MUSEUM
& GARDENS



Go and find: habitats

We created these cards to help groups of learners explore, but everyone is welcome to use them

They were designed with Year 2 pupils at Athelney Primary School in Lewisham



How to use these cards

- Work in small groups
- Take one pack per group
- Pick a card and read the questions together
- Find the animal and make observations
- Share your ideas with others

Please return the pack before you leave

**Go and
find...**

HORNIMAN
MUSEUM
& GARDENS



A nautilus shell

Habitat: ocean

Did you know: a relative of octopuses, these sea creatures have a hard shell and more than 90 tentacles

How does a nautilus's body help it to survive?

What other animals live in the same habitat?



**Go and
find...**

HORNIMAN
MUSEUM
& GARDENS



A brightly coloured animal

How many different colours and patterns does it have?

What is your favourite colour? Why?



**Go and
find...**

HORNIMAN
MUSEUM
& GARDENS



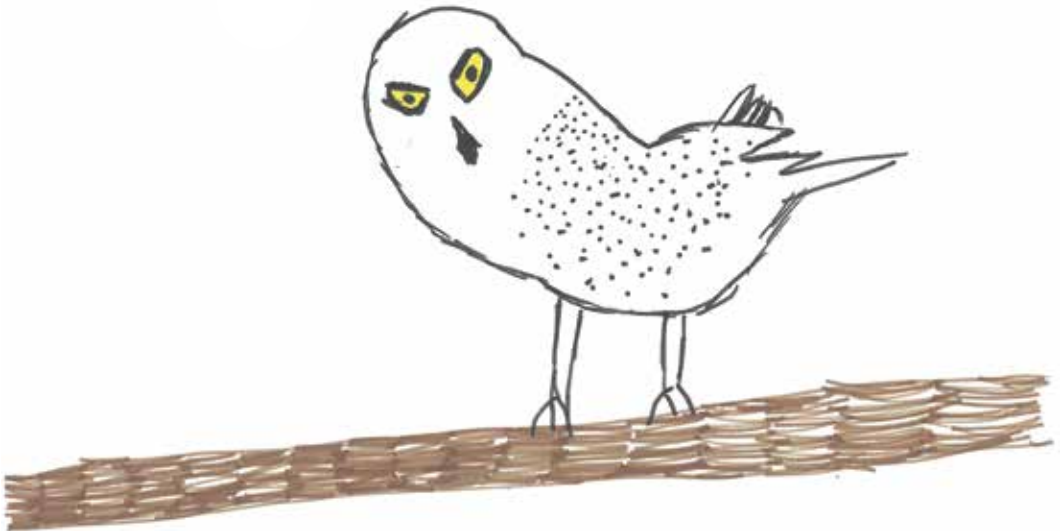
A snowy owl

Habitat: Arctic

Did you know: adult males are almost completely white, but females are white with brown spots. This is probably to help camouflage them on their nests.

How does a snowy owl survive in the cold Arctic?

How do you keep warm in the winter?



**Go and
find...**

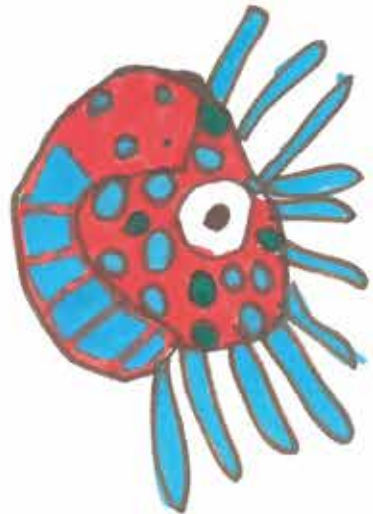
HORNIMAN
MUSEUM
& GARDENS



An animal you like

Look carefully. What do you notice?

Describe something interesting about the animal.



**Go and
find...**

HORNIMAN
MUSEUM
& GARDENS



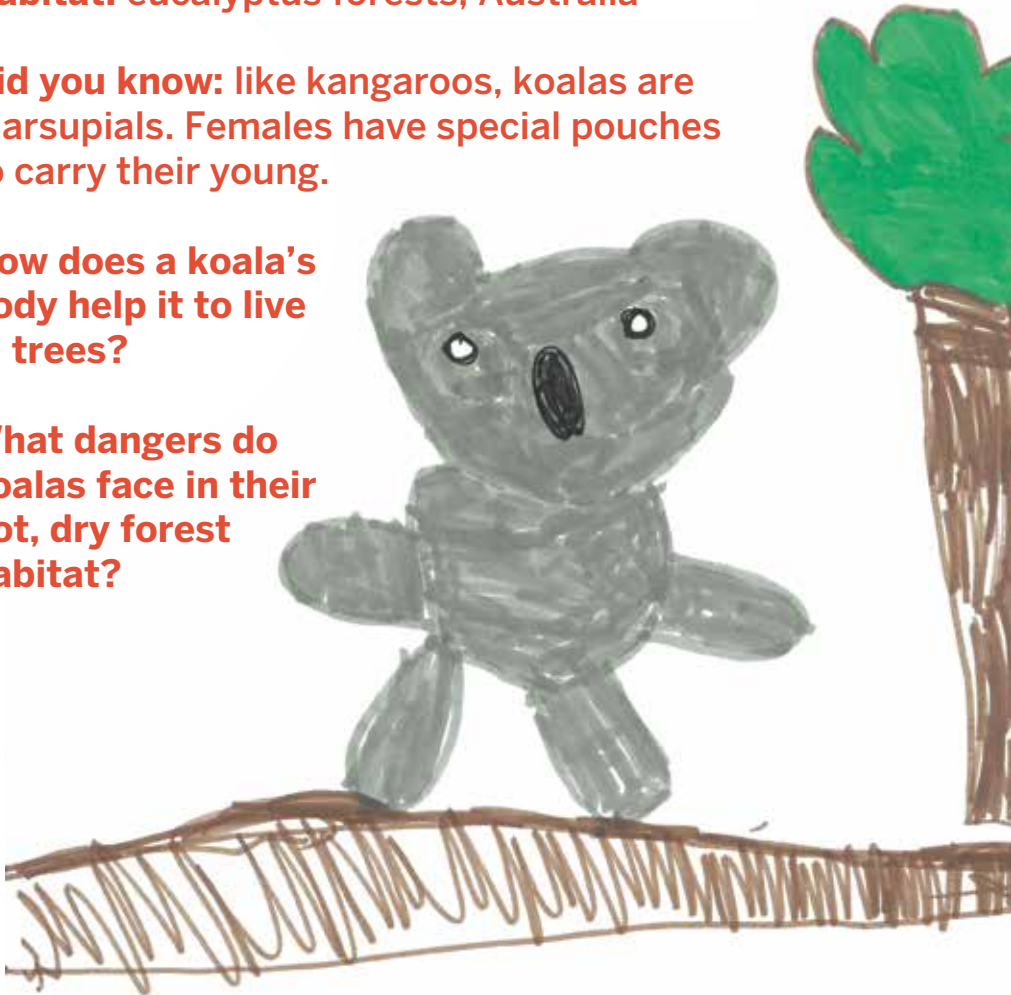
A koala

Habitat: eucalyptus forests, Australia

Did you know: like kangaroos, koalas are marsupials. Females have special pouches to carry their young.

How does a koala's body help it to live in trees?

What dangers do koalas face in their hot, dry forest habitat?



**Go and
find...**

HORNIMAN
MUSEUM
& GARDENS



An animal you have never seen before

**Which habitat might it live in? Look carefully for
clues on its body.**

Does it have anything in common with the koala?



**Go and
find...**

HORNIMAN
MUSEUM
& GARDENS



An otter

Habitat: rivers, lakes and along the coast

Did you know: thirteen otter species live in different water habitats around the world, from miniature Asian short-clawed otters to giant river otters the size of a leopard.

How do otters survive in rivers or lakes?

How do you move in water?



**Go and
find...**

HORNIMAN
MUSEUM
& GARDENS



An animal that lives in London

Have you ever seen this animal outdoors?

What wildlife do you notice around London?

How can you help animals in your local area?

Explore further...

Our gardens are full of incredible living plants and animals. How many can you find?

How do they survive in their habitats?